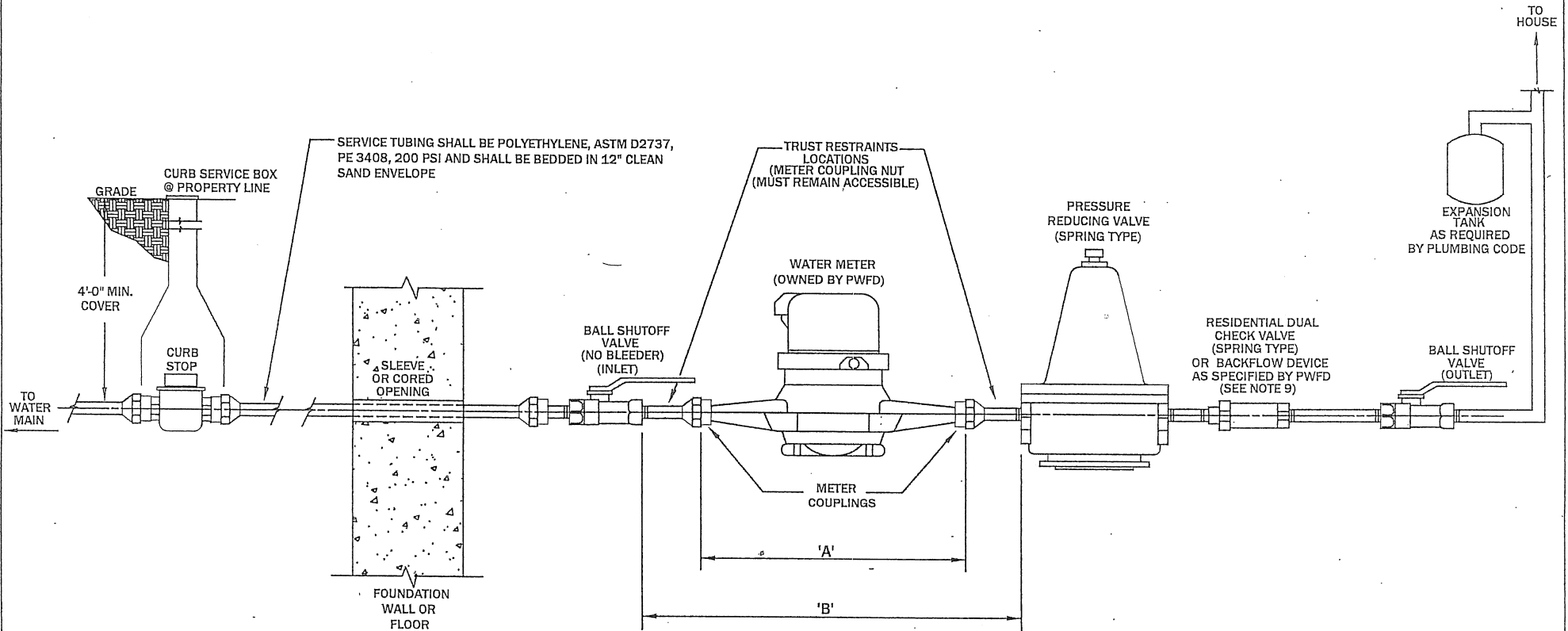


FIGURE 1.

PORTSMOUTH WATER AND FIRE DISTRICT REQUIREMENTS FOR SMALL WATER METER INSTALLATION



GENERAL NOTES:

1. METER IS FURNISHED AND INSTALLED BY PWFD. METER COUPLINGS ARE AVAILABLE FROM PWFD. METER SHALL BE SET IN THE HORIZONTAL POSITION. RESIDENTIAL WATER METER SHALL BE 3/8" UNLESS OTHERWISE APPROVED.
2. METER SHALL BE LOCATED IN AN ACCESSIBLE LOCATION AND AT THE POINT WHERE THE WATER SERVICE ENTERS THE STRUCTURE. METER SHALL BE MOUNTED A MINIMUM OF 12" ABOVE THE FLOOR, AND A MINIMUM OF 8" CLEARANCE FROM WALL.
3. THRUST RESTRAINTS COMPRISED OF THREADED RODS WITH SUITABLE CLAMPS AND ANCHORS SHALL BE INSTALLED TO ANCHOR THE METER SETTING TO THE FLOOR AND/OR WALL, AS APPROPRIATE, AND AS APPROVED BY PWFD, TO PREVENT MOVEMENT.
4. PRESSURE REDUCING VALVE IS REQUIRED BEFORE BACKFLOW ASSEMBLY IN LOW SERVICE AREA BELOW ELEVATION 90' (MSL) AND IN HIGH SERVICE AREA BELOW ELEVATION 210' (MSL).
5. CONNECTIONS PRIOR TO THE OUTLET SHUTOFF VALVE ARE PROHIBITED.
6. ALL FITTINGS AND VALVES THROUGH THE OUTLET SHUTOFF VALVE SHALL BE BRASS OR BRONZE (ANSI/NSF 372 AND/OR ANSI/NSF 61G). SOLDERED JOINTS ARE PROHIBITED.
7. SERVICE TUBING SHALL HAVE STAINLESS STEEL INSERTS OF COMPATIBLE SIZE AND LENGTH AT EACH COMPRESSION FITTING.
8. ELECTRICAL GROUND CLAMPS NOT PERMITTED ON METER SETUP OR PLUMBING.
9. AFTER REVIEW OF APPLICATION PART 2, PWFD WILL NOTIFY APPLICANT OF AS TO THE TYPE OF BACKFLOW DEVICE REQUIRED. (IF APPLICABLE)

| METER SETTING DIMENSION TABLE | | | |
|-------------------------------|-----------------|-------------------|--------------------|
| METER SIZE | METER SPACE 'A' | COUPLING IPS INCH | ASSEMBLY SPACE 'B' |
| 5/8" | 7 3/4" | 1/2" 3/4" | 12 1/4" 12 1/4" |
| 3/4" | 9 1/4" | 3/4" 1" | 13 1/2" 13 3/4" |
| 1" | 11" | 1" | 15 3/4" |